

ALBION RIVERSIDE

SPECTACULAR LATERAL RIVERSIDE APARTMENT IN AN ICONIC BUILDING WITH BREATHTAKING VIEWS OF THE LONDON SKYLINE

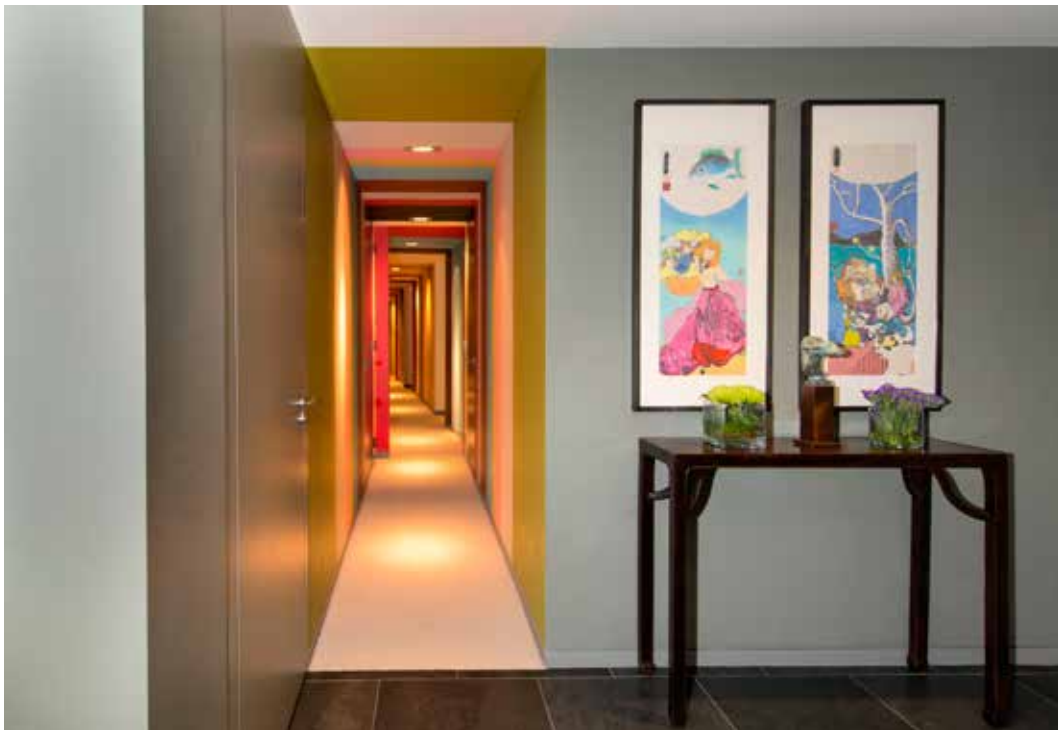


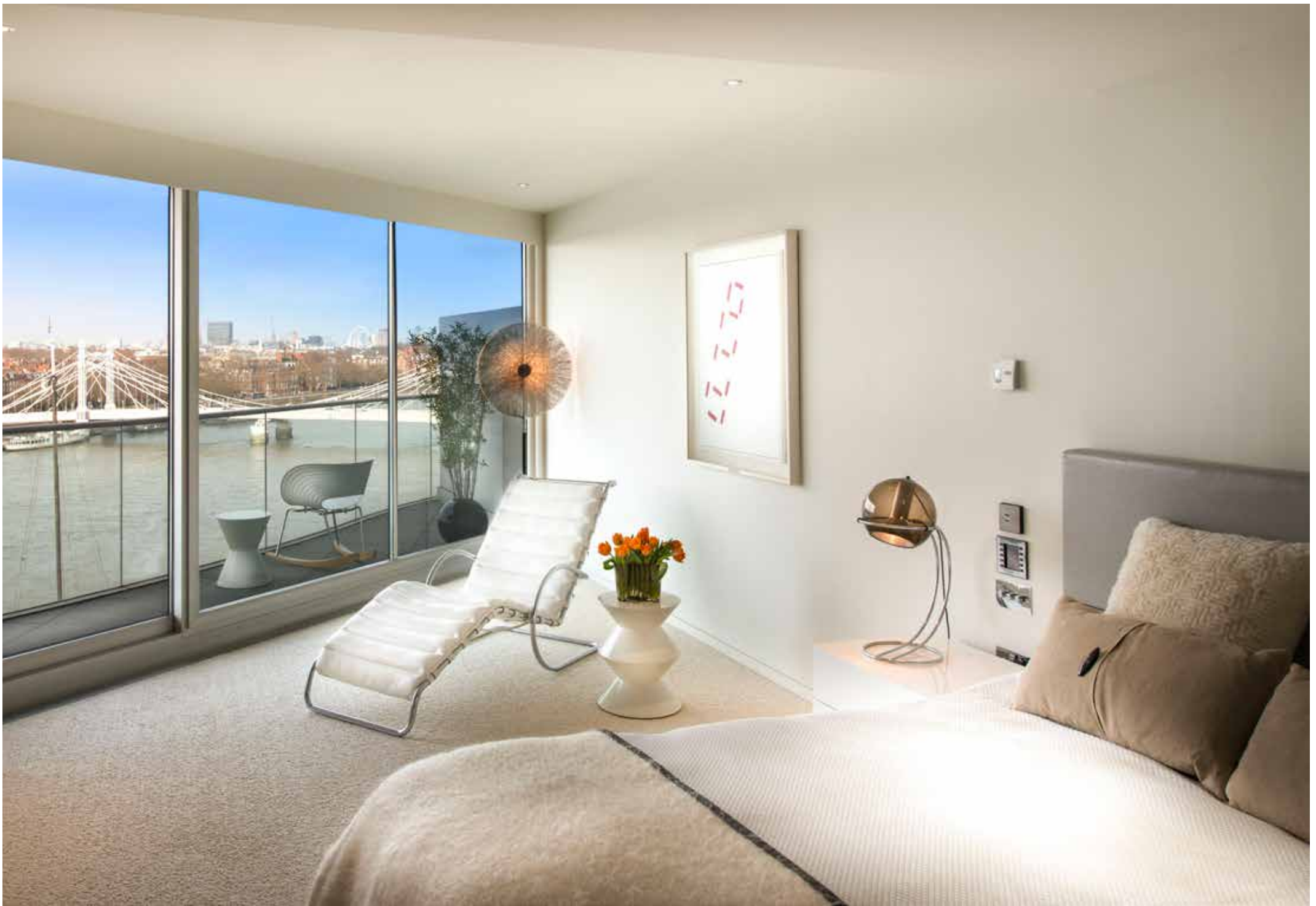
Designed by world-renowned architects Foster and Partners, this magnificent apartment is in the most desirable and rarely available position within this landmark building. A combination of four flats, the impressive lateral space of 6,000 sq ft is interior designed throughout to the highest standards. It benefits from unrivalled river views, superb entertainment space, excellent accommodation as well as privacy and security.

- Imposing entrance hall
- Vast reception room 71 ft x 32 ft
- 6 bedrooms, 6 bathrooms (all ensuite)
- Self-contained guest flat with its own entrance
- Staff quarters with 2 staff bedrooms and bathroom
- Guest cloakroom
- Media snug
- Acclimatised wine room
- Laundry and utility room
- Storage room
- Air cooling throughout
- Audio surround sound system
- Crestron controlled lighting system
- Floor to ceiling windows
- Large wraparound river front balcony
- 24-hour security and concierge service
- Residents' gym and swimming pool
- Secure underground parking for 4 cars



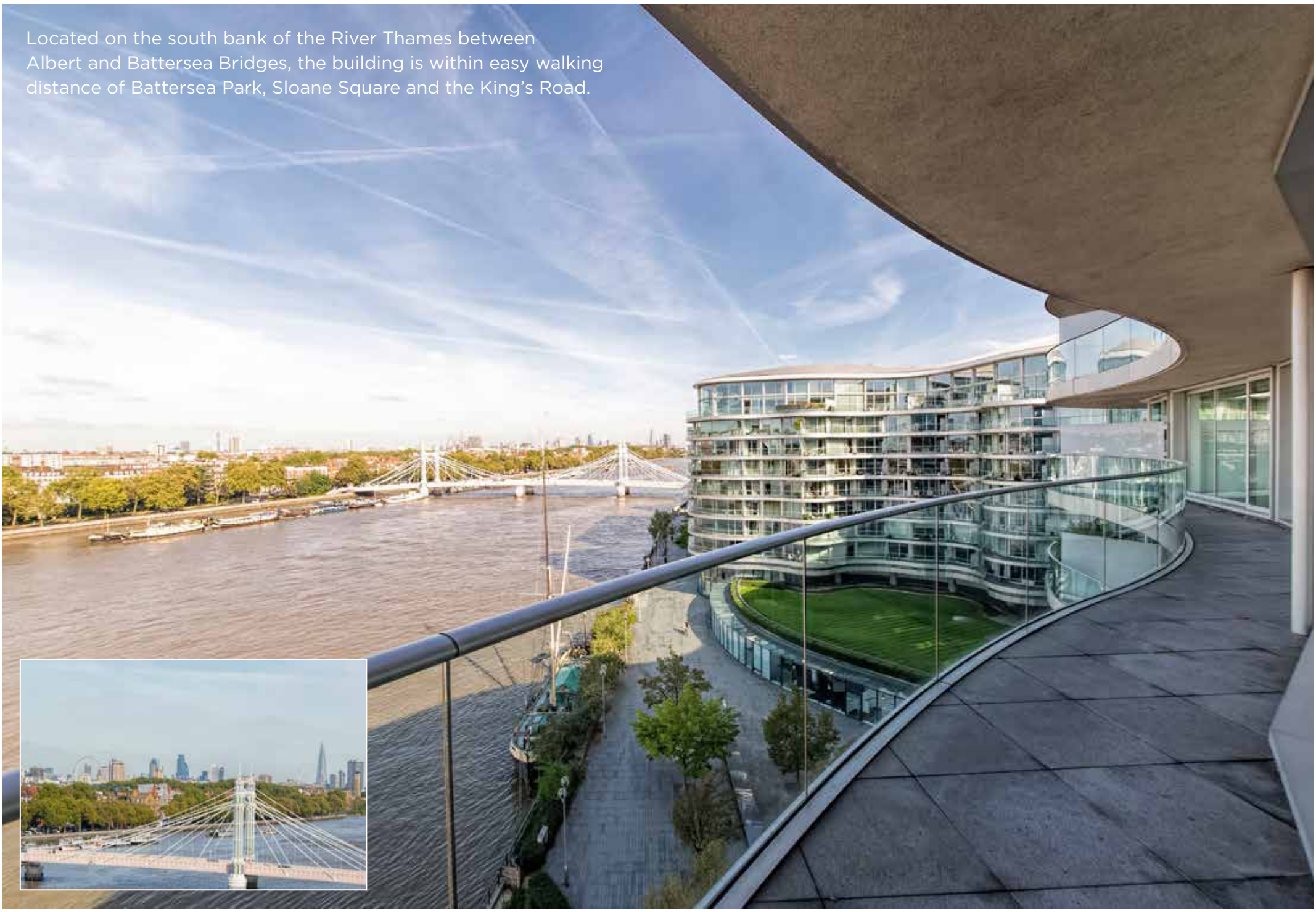








Located on the south bank of the River Thames between Albert and Battersea Bridges, the building is within easy walking distance of Battersea Park, Sloane Square and the King's Road.



Approximate Gross Internal Area
557.65 sq m / 6,003 sq ft

Terms

Tenure

Leasehold

Service Charge

£33,105 per annum approximately

Local Authority

London Borough of Wandsworth

Price on Application



Energy Efficiency Rating		Current	Potential
Very energy efficient - lower running costs			
95-100	A		
81-94	B		
69-80	C		
55-68	D	64	64
39-54	E		
21-38	F		
1-20	G		
Not energy efficient - higher running costs			
England & Wales		EU Directive 2002/91/EC	

H. BARNES & CO
PROPERTY INTELLIGENCE
020 7499 3434
WWW.HBARNES.LONDON



Important Notice

1. Particulars: These particulars are not an offer or contract, nor part of one. You should not rely on statements by Knight Frank LLP or Simon Barnes in the particulars or by word of mouth or in writing ("information") as being factually accurate about the property, its condition or its value. Neither Knight Frank LLP or Simon Barnes nor any joint agent has any authority to make any representations about the property, and accordingly any information given is entirely without responsibility on the part of the agents, seller(s) or lessor(s). 2. Photos etc: The photographs show only certain parts of the property as they appeared at the time they were taken. Areas, measurements and distances given are approximate only. 3. Regulations etc: Any reference to alterations to, or use of, any part of the property does not mean that any necessary planning, building regulations or other consent has been obtained. None of the services or appliances have been tested and no warranty is given or is to be implied that they are in working order. A buyer or lessee must find out by inspection or in other ways that these matters have been properly dealt with and that all information is correct. 4. VAT: The VAT position relating to the property may change without notice. Particulars dated October 2015. Photographs dated September 2015.

Knight Frank LLP and Simon Barnes is a limited liability partnership registered in England with registered number OC305934. Our registered office is 55 Baker Street, London, W1U 8AN, where you may look at a list of members' names.

Knight Frank
Riverside
020 3597 7670
KnightFrank.co.uk